

Example of the two-page centre spread (design used for 2025/2026)

Please note, the design will be updated with new precept figures, images, and current examples of investment.

Saltash Town Council Working for the people of Saltash



To be able to continue to preserve and maintain services for the community of Saltash it is necessary to increase your Council Tax for 2025/2026 by 11%.

This equates to £27.34 per year which is just **53 pence per week**

The larger portion of your **Council Tax** is set by Cornwall Council, Devon and Cornwall Police, and Adult Social Care. **for a typical Band D property.**

The Saltash Town Council portion of council tax is used to support the community in many ways.

Here are just a few examples of how your Saltash portion of council tax money has been reinvested in the community during 2023-2024:

- £59,069 for professional youth work commissioning
- £25,000 for Community Chest and Festival funds
- £20,000 for Saltash Play Park upgrades
- £4,726 for Saltash Youth Network

- Kitchen refurbishment at Isambard House for venue hire purposes
- Devolution of assets, including Victoria Gardens
- Installation of new stone memorial benches
- Grounds maintenance and floral display management
- Refurbishment of library windows
- Christmas lighting display installation
- St Stephens Churchyard upkeep
- Organisation of civic events and parades
- Tree planting initiatives
- Maintenance and management of public conveniences
- Library services provision
- Street furniture installation and maintenance
- Allotment management and development

Funding Streams

The Town Council has been successful in securing various funding during the year 2023-2024.

Funds have been received from Town Vitality (Working in partnership with Town Team), Cornwall Council's Community Infrastructure Fund, and Community Levelling Up, to be able to start reinvesting into the community.

Business Plan

Saltash Town Council has officially launched the new Business Plan for the period 2024-2027, setting out a road-map for the town's development over the next few years.

Deliverables

The Town Council has been focused on advancing key strategic priorities, with significant progress already made in several key areas. A summary of some of these achievements are highlighted in the following section.



Boosting Jobs and Economic Prosperity

Saltash Town Council has made a commitment to growth and has successfully recruited for new positions within the council to support the needs of the community.



Travel and Transport

A successful connectivity trial at Waterside has fostered a strong partnership with Plymouth Boat Trips, resulting in new water transport options for both residents and tourists to enjoy.



Health and Wellbeing

Saltash Town Council installed Happy Plaques on Town Council benches, creating welcoming spaces where residents and visitors can sit and engage in open, safe conversations to support mental health and well-being.



Climate Emergency

Saltash Town Council is dedicated to transitioning its fleet to 100% electric vehicles in order to reduce its carbon footprint.



Housing

Saltash Town Council is committed to improving housing access for all by considering all housing types, including rental and affordable options, and providing support input to the Treledan developments for the town's benefit.



Recreation and Leisure

Upgrades to Saltash Play Parks funded with £75,000 from Cornwall Council's CIL fund and £20,000 from Saltash Town Council, have been a great success for the Saltash community.

Facebook Advert Example - DRAFTS

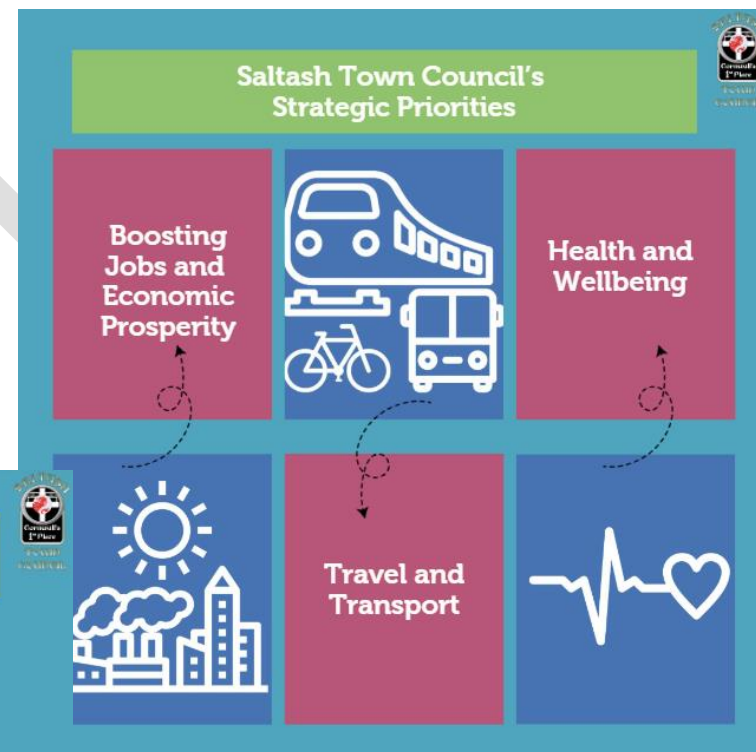
This Facebook advert would be a video that can be viewed here: [Example video for STC Precept FB.mp4](#). Please note, this design was used last year and will be updated to reflect 2026/2027.



Saltash Town Council's Progress

Recreation and Leisure

Grand opening of
Honeysuckle
and Grassmere
Way Play Parks



Bus Stop Design - DRAFT

Please note, this design will be updated with the new precept figures once approved.




SALTASH TOWN COUNCIL

WORKING FOR THE PEOPLE OF SALTASH

To be able to continue to preserve and maintain services for the community of Saltash it is necessary to increase your Council Tax for 2025/2026 by **11%**.

This equates to **£27.34 per year** which is just **53 pence per week** for a typical Band D property.

Saltash Town Council has launched its **Business Plan for 2024-2027**, and being focused on key strategic priorities, significant progress has been made, with notable achievements highlighted below.

 <h3>Boosting Jobs and Economic Prosperity</h3> <p>Saltash Town Council has made a commitment to growth and has successfully recruited for new positions within the council to support the needs of the community.</p>	 <h3>Travel and Transport</h3> <p>A successful connectivity trial at Waterside has fostered a strong partnership with Plymouth Boat Trips, resulting in new water transport options for both residents and tourists to enjoy.</p>	 <h3>Recreation and Leisure</h3> <p>Upgrades to Saltash Play Parks funded with £75,000 from Cornwall Council's CIL fund and £20,000 from Saltash Town Council, have been a great success for the Saltash community.</p>
 <h3>Health and Well-being</h3> <p>Saltash Town Council installed Happy Plaques on Town Council benches, creating welcoming spaces where residents and visitors can sit and engage in open, safe conversations to support mental health and well-being.</p>	 <h3>Housing</h3> <p>Saltash Town Council is committed to improving housing access for all by considering all housing types, including rental and affordable options, and providing support and input to the Treledan developments for the town's benefit.</p>	 <h3>Climate Emergency</h3> <p>Saltash Town Council is dedicated to transitioning its fleet to 100% electric vehicles in order to reduce its carbon footprint.</p>

Here are just a few more examples of how your Saltash portion of council tax money has been **reinvested** in the community during 2023-2024:

- £59,069** for professional youth work commissioning
- £25,000** for Community Chest and Festival funds
- £20,000** for Saltash Play Park upgrades
- £4,726** for Saltash Youth Network



Scan the QR code, or please visit the Guildhall or Library for further information



THE GUILDHALL,
12 LOWER FORE STREET
SALTASH PL126JX



ENQUIRIES@SALTASH.GOV.UK



01752844846



WWW.SALTASH.GOV.UK



@SALTASHTOWNCOUNCILOFFICIAL